

Joy Squared 12x48

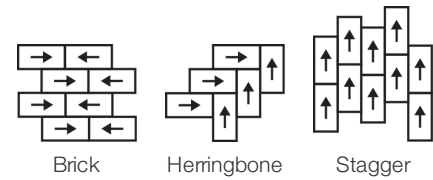
Collection	Joy Squared	
Style Number	4495V	
Construction	Heavy Commercial Luxury Vinyl Tile	
Class / ASTM F1700	Class III, Type B	
Finish	ExoGuard+®	
	U.s.	Metric
Nominal Dimensions	12 in w x 48 in l	30 cm w x 122 cm l
Actual Dimensions	12.00 in w x 48.00 in l	30.48 cm w x 121.92 cm l
Wear Layer Thickness	20 mil (0.02 in)	0.51 mm
Overall Thickness	0.098 in	2.5 mm
Edge Profile	Squared Edge	
Installation Type	Dry Back	
Installation	Direct Glue	
Recommended Adhesive	S150 95 Resilient Tile Spray, 4200 Resilient Tile 4 Gallon, 2200 Resilient Tile 4 Gallon or 4151 Multi-Use Premium 4 Gallon	

Packaging

Pieces Per Carton	17 pcs	
Area Per Carton	68 sq ft	6.32 sq m
Weight Per Carton	57.79 lbs	26.21 kg



Recommended Installation Method



Coordinating Products

LVT: Joy Squared

Performance + Testing

Residual Indentation (Astm F1914)	Passes
Resistance To Heat (Astm F1514)	Passes
Resistance To Light (Astm F1515)	Passes
Resistance To Chemicals (Astm F925)	Passes
Coefficient Of Friction (Astm D2407, Slip Resistance)	>0.6, meets the recommended static coefficient of friction for ADA walking surfaces and accessible routes

Test Reports may be included or listed by the manufacturing/inventory style number as opposed to the noted selling style number.

Warranties

15 Year Commercial Limited
[Commercial Limited Underbed Bond Warranty S150/4151/Lokworx+ Resilient](#)

Diversity, Equity & Inclusion

We believe all humans are equal. Individually and collectively, we need to proactively create and promote opportunities that give everybody an equal footing in life. We nurture an environment where every voice and perspective can be heard, and proactively promote accessibility and inclusivity inside our network and beyond. One proof point is our ability to meet the criteria of the Social Fairness pillar of the Cradle to Cradle Product Standard. At Shaw Industries, we promote supplier participation that is reflective of Shaw's diverse customer base and local community. More than 42% of our spend***** is with small and diverse businesses. We believe having a strong Supplier Diversity Program is strategic for bringing more innovation to our businesses and opening new markets for growth.

Material Health & Environmental Certifications

Health & Wellbeing	
Material Ingredient Transparency	Health Product Declaration (HPD) 1000 ppm Disclosure
Climate Impact	
Environmental Product Declaration (EPD)	3rd Party Certified in Accordance with ISO 14025, EN 15804, & ISO 21930:2017
Total Recycled Content	30% (Pre-Consumer 30% Post-Consumer 0%)
Global Product Assessment	Environmental Guarantee* Through Our Environmental Guarantee, Shaw Pledges to Transport And Recycle Any Shaw Manufactured Resilient Within The United States And Canada At No Cost to The Customer. FloorScore® Certified Country of Origin United States

Green Leed Contribution Credit

MR Credit: Building Product Disclosure and Optimization Material Ingredients - Option 1: Material Ingredient Reporting	Health Product Declaration (HPD) 100 Ppm Disclosure
MR Credit: Building Product Disclosure and Optimization Environmental Product Declarations - Option 1: Environmental Product Declaration (EPD)	3rd Party Certified in Accordance with ISO 14025, EN 15804, & ISO 21930:2017
EQ Credit: Low Emitting Materials Option 1: Product Category Calculations	FloorScore Certified

Additional Information

* To learn more about the recyclability of our products and our Environmental Guarantee, please visit shawcontract.com/sustainability . Installation Guidelines Maintenance Guidelines	<p>Please visit www.shawcontract.com for the most current warranty information. Specifications are subject to nominal manufacturing variance. Material supply and/or manufacturing processes may necessitate changes without notice.</p> <p>This product is an exclusive design and may not be duplicated in any manner. Use of this design in the creation of another product design is also strictly prohibited.</p> <p>*****Allowable spend is domestic (US) spend in categories in which we have diverse suppliers from which to choose. Compared to non-allowable spend which includes categories in which we do not have domestic, small or diverse suppliers available to meet our needs.</p> <p>Visit shawcontract.com/testing for more information.</p>
--	--

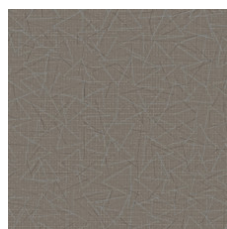
Available Colorways



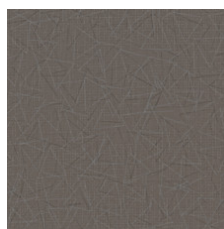
Snow Day 93100
V2 - Slight Variation



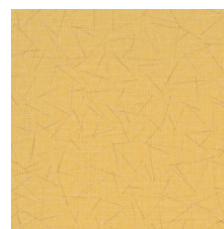
Beach 93160
V2 - Slight Variation



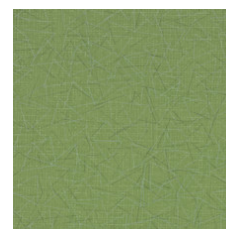
Playground 93250
V2 - Slight Variation



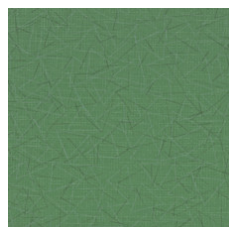
Song 93270
V2 - Slight Variation



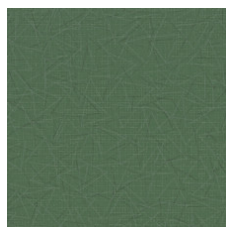
Sun 93290
V2 - Slight Variation



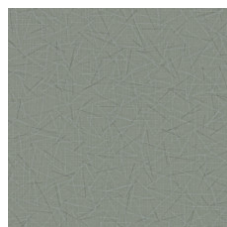
Bouquet 93310
V2 - Slight Variation



Park 93360
V2 - Slight Variation



Grass 93375
V2 - Slight Variation



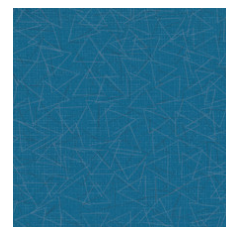
Treehouse 93385
V2 - Slight Variation



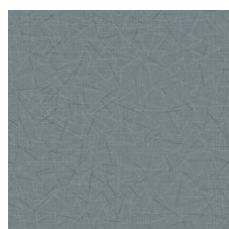
Spring 93390
V2 - Slight Variation



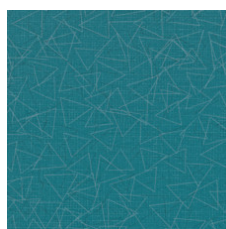
Sky 93405
V2 - Slight Variation



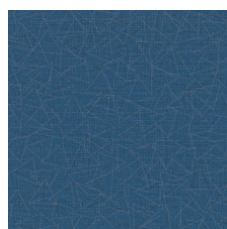
Pool 93410
V2 - Slight Variation



Bubble 93415
V2 - Slight Variation



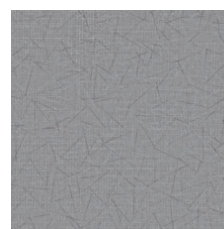
Summer 93470
V2 - Slight Variation



Snooze 93490
V2 - Slight Variation



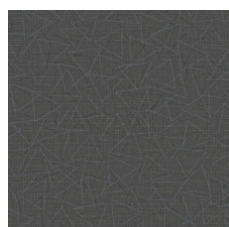
Holiday 93500
V2 - Slight Variation



Tire Swing 93520
V2 - Slight Variation



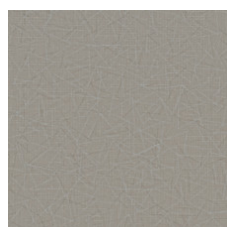
Bicycle 93560
V2 - Slight Variation



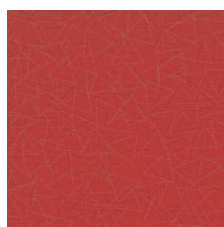
Firefly 93595
V2 - Slight Variation



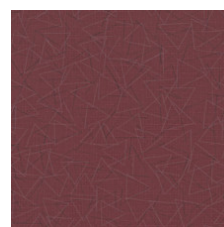
Firework 93680
V2 - Slight Variation



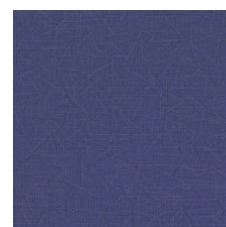
Backyard 93761
V2 - Slight Variation



Balloon 93890
V2 - Slight Variation



Carousel 93895
V2 - Slight Variation



Sprinkle 93995
V2 - Slight Variation

Color and Visual Variation Index

Shade and texture variation is inherent in all resilient products and can vary significantly from piece to piece. Samples should be used to assess color.

V1



Uniform Appearance

V2



Slight Variation

V3



Moderate Variation

V4



Substantial Variation

